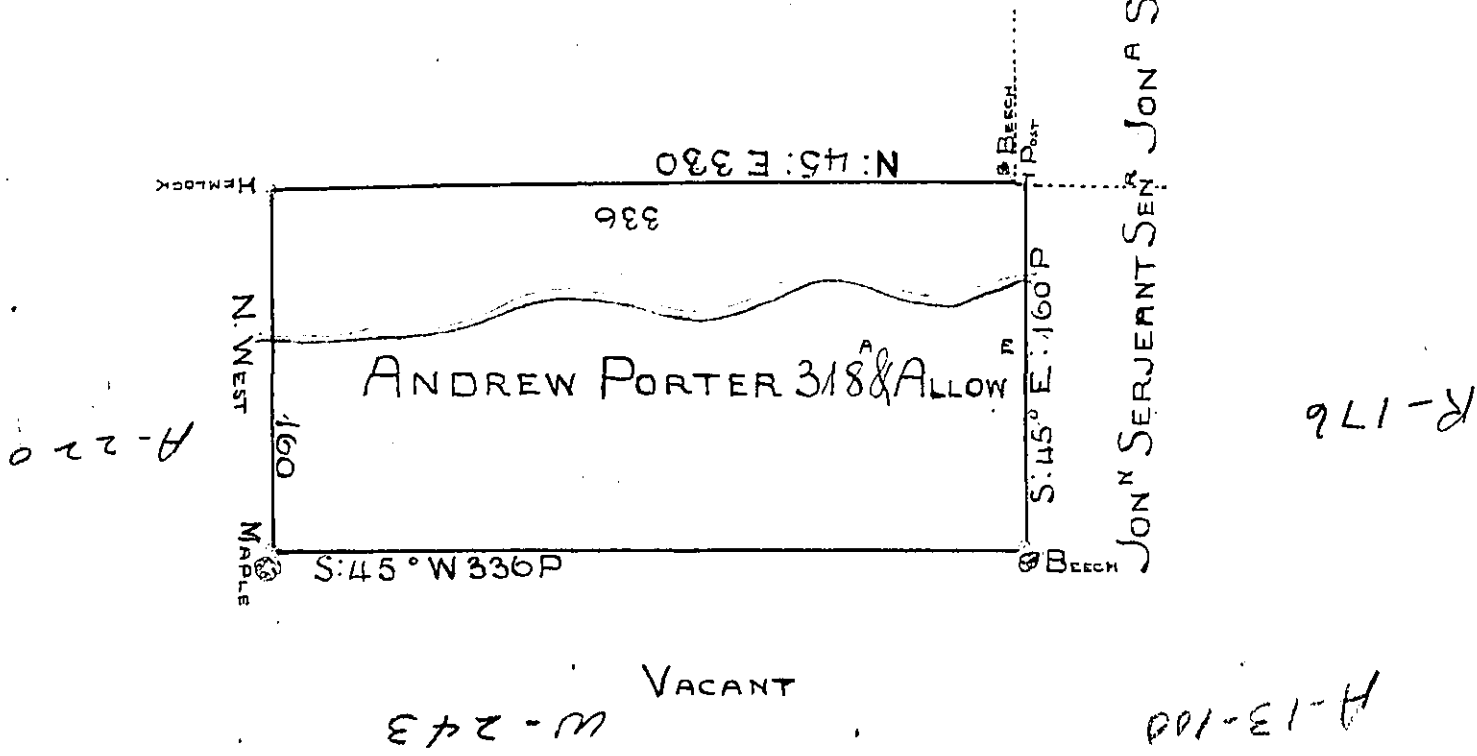


E-596



A Draught of a Tract of Land Called *Situate*  
 about North East and by East & About a Mile distant from the  
 Branches of Lehighanack including a Beaver Dam in the County  
 of Northumberland Containing three hundred and Eighteen  
 Acres besides the usual Allowance of six Acres for  
 Roads & Surveyed the 20<sup>th</sup> Day of September 1774 In  
 pursuance of a Warrant dated the 15<sup>th</sup> Day of June 1774  
 by *Chas Stewart Esq* Surveyor  
 To *John Lukens Esq* Surveyor Genl

IN TESTIMONY that the above is a copy of the original remaining on file in the  
 Department of Internal Affairs of Pennsylvania, made con-  
 formably to an Act of Assembly approved the 16th day of  
 February, 1833, I have hereunto set my Hand and caused  
 the Seal of said Department to be affixed at Harrisburg, this

*Twentieth* day of *July* 1876

*J. M. McAuley*  
 Secretary of Internal Affairs